

# JCF PARADE

The parade will line-up on East Main from Tiger Drive (high School) Back towards 200 East road. LARGE FLOATS & TRAILERS should come in from 200 ease to avoid making U-turns. The order in line will be first-come / first-serve in the category you are entering. Entrants will be placed in their Parade positions by the Parade Chairman. The Parade will begin promptly at 5 p.m.

August 9, 2011 but you must be in line and ready to go by 4:30 p.m.

There are several different categories for your parade entry, Commercial, church, civic, and youth floats along with antique cars, tractors / farm equipment and horses / wagons. The Fair theme for 2011 is "Tiki Lights and Country Nights!" There will be trophies given for the Grand Champion, second and third place winners.

Please, in the interest of safety, **NO WATER GUNS** and **DO NOT THROW CANDY** (You may walk and handout candy or brochures)

PRE-ENTRY WILL BE AT THE FAIR OFFICE STARTING **JUNE 1st, 2011 THRU AUGUST 8th, 2011. COST IS \$5.00.** IF YOU ENTER THE DAY OF THE PARADE AT THE LINE-UP, **COST IS \$10.00.**

## "Tiki Lights and Country Nights!"

2011 Parade Entry Form

Pre-Entry \$5.00 \_\_\_\_\_ At Parade line-up \$10.00 \_\_\_\_\_

Name \_\_\_\_\_

Category

Commercial \_\_\_\_\_ Church \_\_\_\_\_ Civic \_\_\_\_\_ Youth \_\_\_\_\_

Antique Cars \_\_\_\_\_ Tractors & Farm Equipment \_\_\_\_\_ Horse's & wagons \_\_\_\_\_

Description \_\_\_\_\_

\_\_\_\_\_

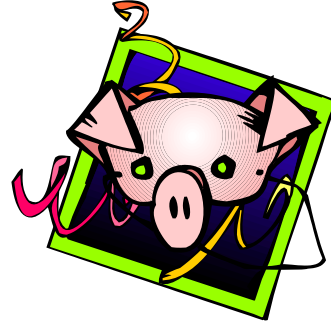
\_\_\_\_\_



Rules on next page

## PARADE RULES

1. Entries at Fair Office starting June 1st thru August 8th, 2011. Pre-entry is \$5.00 and \$10.00 on the day of the parade.
2. Line up starts at 2:30 and must be ready by 4:30.
3. Parade will start August 9 at 5:00 pm SHARP!!
4. Enter from north Tiger Drive. (not from south or Main Street)
5. Enter north entrance high school parking lot.
6. When assigned a line up position. **STAY THERE!!!**
7. Respect and be courteous to volunteers in parking lot
8. Do not move into parade route until directed
9. All horses and related equipment unload on 8th at Forsyth Park and North Tiger drive.
10. Horses and related equipment line up on Tiger Drive just north of the south entrance to the High school parking lot.
11. NO horses or heavy equipment on LDS parking lot.
12. NO horses or motorcycles on any grass areas.
13. Park personal vehicles at south east corner of high school parking lot.
14. Floats are to be assembled **PRIOR** to entering the high school parking lot. Final prep is **ONLY** allowed at line up.
15. **PICK UP ALL YOUR TRASH AND CANDY WRAPPERS.**
16. Limit of 2 vehicles per business entry.
17. In the interest of safety, **NO water guns** and **DO NOT THROW CANDY** (you may walk and handout candy or brochures)
18. Categories to be judged on
  - ❖ THEME
  - ❖ ORIGINALITY
  - ❖ OVERALL APPEARANCEIn the following **CATAGORIES**
  - ❖ Commercial
  - ❖ Church
  - ❖ Civic
  - ❖ Youth
  - ❖ Antique cars
  - ❖ Tractors & Farm Equipment
  - ❖ Horses & Wagons
19. Winners will be announced at the Pig Wrestling that evening.



There will be a first place winner in each category and there will be a GRAND, 1st, and 2nd prize overall.